

WE DON'T JUST BUILD STRUCTURE  
**WE SHAPE FUTURE**



**VIGNESH PEB SOLUTIONS PVT. LTD.**

Transforming Spaces with PEB Expertise



+91 98480 60444  
+91 88860 60444



connect@vigneshpeb.com  
www.vigneshpeb.com





# Introduction

**Vignesh PEB Solutions, established in 2006** under the visionary leadership of Mr. Vignesh, has consistently set benchmarks in the construction industry, our firm initially focused on Local contracts and quickly gained a reputation for precise and dependable project delivery.

In **2013**, we embraced a new era by expanding into **Pre-Engineered Building Systems & Prefab Structures, launching Vignesh Roofing Systems**. This significant transformation positioned us as a leading provider of **Pre-Engineered Steel Construction solutions in India**.

Our commitment to excellence was further solidified in **2024** when we **proudly registered as a Private Limited Company**. This milestone marks our unwavering dedication to growth and innovation.

From conceptualization to completion, **Vignesh Roofing Systems** offers comprehensive services tailored to the diverse needs of our clients. Our expertise spans **Industrial & Warehousing Solutions**, making us your trusted one-stop solution provider.

# What We Offer



**Customized PEB Solutions:** Our expert team collaborates closely with clients to design and fabricate buildings tailored to their specific requirements, ensuring optimal functionality and aesthetics.

**High-Quality Materials:** We source only the finest materials to guarantee the longevity and resilience of our structures, adhering to international standards and best practices.

**Comprehensive Services:** From initial consultation and design to fabrication, delivery, and installation, we provide end-to-end services to ensure a seamless and hassle-free experience for our clients.

**Advanced Technology:** Utilizing state-of-the-art technology and equipment, we ensure precision and excellence in every aspect of our projects, from design to execution.

**Sustainability:** Committed to environmental stewardship, our PEB solutions incorporate sustainable practices and materials, contributing to greener and more energy efficient buildings.



# Why Choose Us?

**Expertise:** With 19 years of experience and a team of highly skilled professionals, we bring unparalleled expertise to every project.

**Innovation :** Our innovative approach and continuous improvement culture drive us to deliver cutting-edge solutions that meet the highest industry standards.

**Customer Satisfaction :** We prioritize our clients needs and strive to exceed their expectations, ensuring complete satisfaction with our products and services.

**Reliability :** Dependability and trustworthiness are the cornerstones of our business, making us a preferred partner for clients worldwide.





# KEY FEATURES OF TURNKEY SOLUTIONS

Comprehensive Design Services  
↓  
Manufacturing Expertise  
↓  
Procurement & Contract Management  
↓  
Project Management Excellence  
↓  
Planning & Coordination Solutions  
↓  
Preventive Maintenance Program  
↓  
Customized Flooring Design, FF & Execution  
↓  
Compliant Fire-fighting Systems  
↓  
Full Project Management Oversight  
↓  
Sustainable Building Solutions  
↓  
Safety & Compliance  
↓  
Quality Control & Assurance

## [Our Engineering Teams]

- »»» Structural Engineers
- »»» Civil Engineers
- »»» Mechanical Engineers
- »»» Electrical Engineers
- »»» Architectural Engineers
- »»» Fabrication and Detailing Team
- »»» Project Managers and Coordinators
- »»» Safety Engineers
- »»» Environmental Engineers



# Engineering Team

Our engineering team plays a pivotal role in **Pre-Engineered Building (PEB) constructions**. Our engineers are involved from the initial design phase, crafting tailored structural solutions that meet specific project requirements. They ensure all designs comply with stringent safety and quality standards. By selecting optimal materials, they balance cost and durability, contributing to sustainable construction practices.

During **fabrication and assembly**, our engineers provide hands-on supervision, ensuring precision and addressing any technical challenges that arise. Their expertise in **structural analysis, project management, and innovative engineering solutions** ensures our **PEB constructions** are **efficient, reliable, and delivered on time, exceeding client expectations**.





# *Our Equipments*



**CNC Plasma Cutting**



**CNC Hydraulic Press Brake**



**Sheet Rolling**



**Automatic H-Beam**



**Standing Seam**



**Shearing Machine**



**Hydraulic Ironworker**



**MIG & ARC Welding**



**Screw & Piston Compressor**



# Our Fabrication Plant

At **VPS Pvt. Ltd**, our state-of-the-art fabrication plant is Central to our operations. Equipped with advanced machinery and manned by a skilled workforce, we ensure precision and quality in every component. Rigorous quality control measures and efficient workflows enable us to meet tight deadlines without compromising on standards.

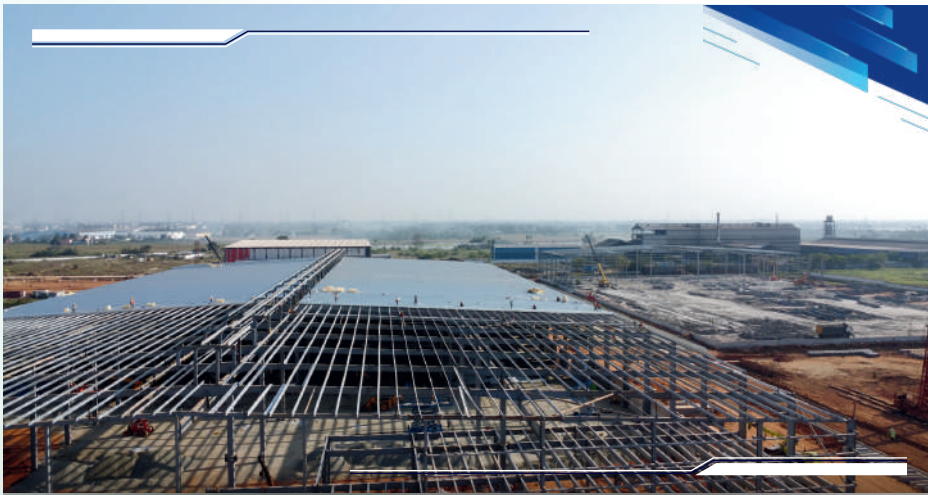




# Erection Services

At **VPS Pvt. Ltd**, our erection services are designed to ensure the efficient and precise assembly of **Pre-Engineered Buildings (PEBs)**. Our experienced team handles every aspect of the erection process with meticulous attention to detail, ensuring structural integrity and safety. Utilizing advanced equipment and adhering to strict safety protocols, we complete projects on schedule and within budget.

Our commitment to quality and efficiency guarantees that each structure is assembled to the highest standards, providing durability and reliability for long-term performance. Trust us to deliver seamless and professional erection services that support the successful completion of your construction projects.



# Environment Health & Safety





# Dome Structure

Without columns or any support system rising from the floor below, a **Dome's Hemispherical Roof** is supported by a few key forces :

The support force that the **Dome's structure** receives from contact with the base and the earth the building is resting on is known as the normal force of nature. This force exerts upward pressure on the earth. **Gravity** is a force of nature that pulls the dome downward and is created when everything on **Earth** is drawn toward its center.

Another way to think of gravity is as the weight of the materials that went into building the **Dome Compression** is the force that pushes in from all sides onto every part of a **Dome**. Imagine a **Brick Dome** where the pressure of the other bricks is applied to each brick.





# Civil Works For PEB

At **VPS Pvt. Ltd**, we offer comprehensive civil works services to complement our **Pre-Engineered Building (PEB)** solutions. Our skilled team manages all aspects of civil engineering, including site preparation, foundation work, and structural integration, ensuring a solid base for your PEB. We employ advanced techniques and adhere to the highest standards of quality and safety, providing seamless integration between civil infrastructure and PEB systems. Our commitment to precision and efficiency ensures that your project progresses smoothly from groundwork to final assembly, delivering reliable and durable structures that meet your specific needs.





# Our Projects

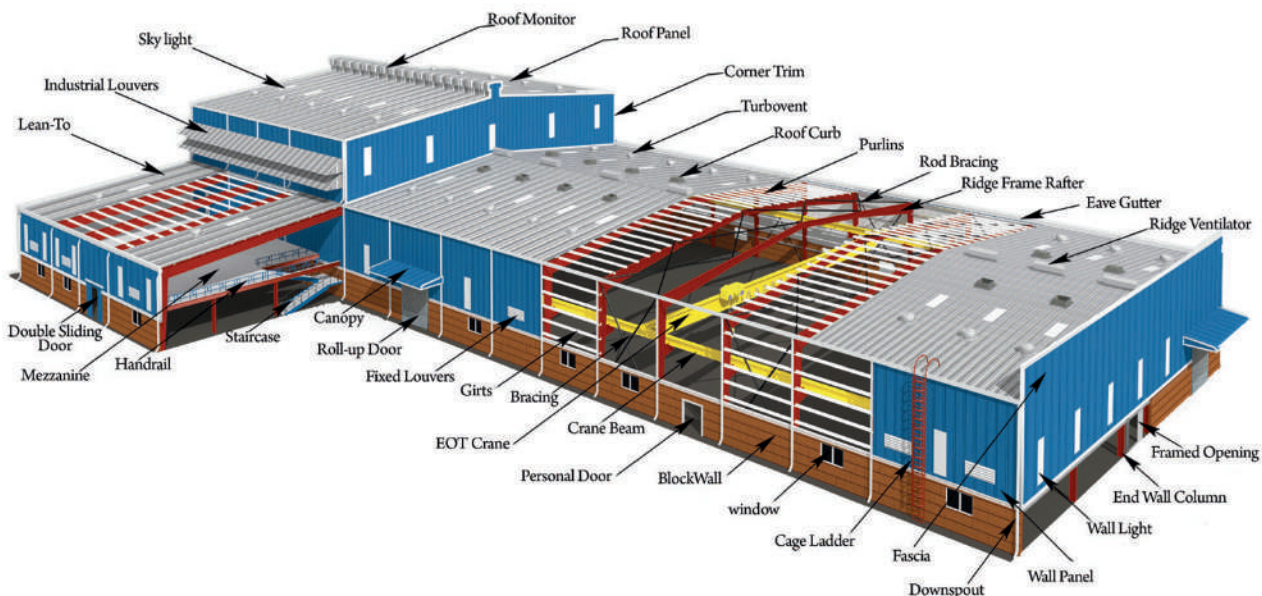
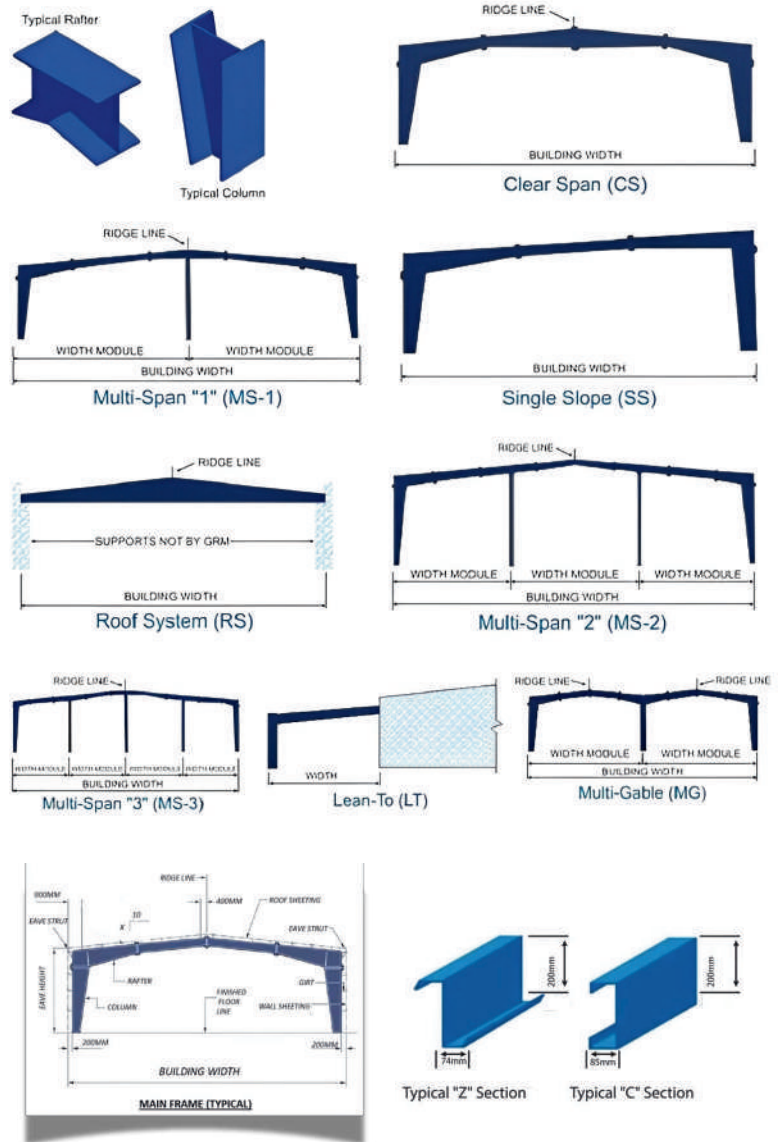




# PEB (Pre-engineered Building)

## SMART BUILDING SOLUTIONS WITH PEB TECHNOLOGY

At **VPS Pvt. Ltd**, we specialize in **Pre-Engineered Buildings** that offer a smarter alternative to traditional construction. Our structures are designed for maximum strength, precision, and cost efficiency, reducing the load on foundations and significantly reducing civil construction costs. With a focus on durability and streamlined installation, we bring you high-performance spaces that are built to last, faster and better.





# Rolling Shutters



Engineered for maximum protection, powered by advanced precision, built tough, operates ultra-smooth, expertly crafted for every demanding and dynamic industrial need in India — ensuring long-lasting performance, easy maintenance, and trusted reliability across all sectors.



Our Rolling Shutters offer strength, security, and style, with custom-built solutions for every industrial and commercial need, ensuring durability and smooth operation every time.

# Accessories

**RIDGE VENT**



**TURBO VENTILATOR**



**TRIMS & FLASHINGS**



Ridge Flashing



Ridge Board Flashing



Apron Flashing



Eaves Flashing

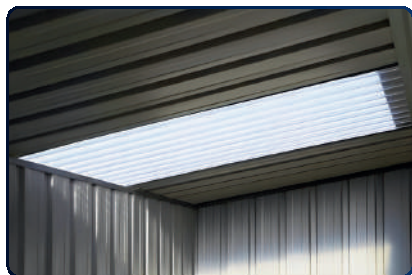


Corner Flashing

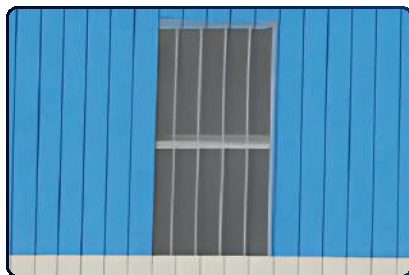


Hip Flashing

**SKY LIGHT**



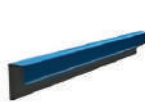
**SKY LIGHT**



Box Gutter Flashing



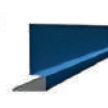
L-Type Flashing



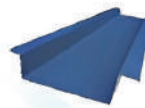
Top Flashing



Eaves Gutter Flashing



Bottom Flashing

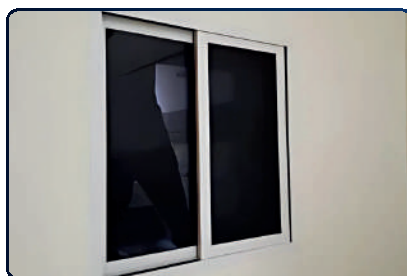


Valley Gutter

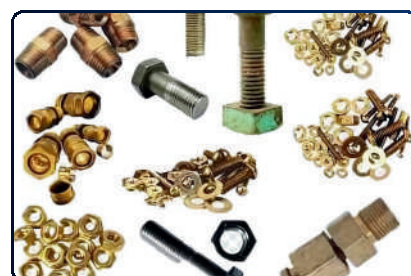
**S TYPE LOUVERS**



**WALL OPENING**



**FASTENERS**



**CANOPY**



**FASCIA**



**INSULATION**





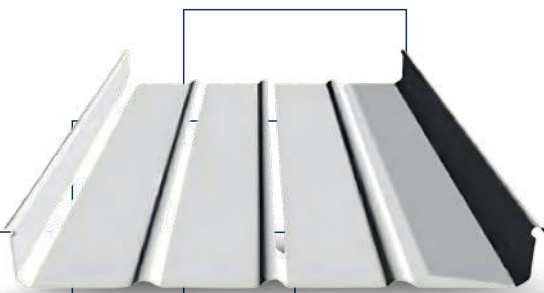
# Discover the Excellence of

## STANDING SEAM ROOFING

Unmatched Durability and Style Standing seam roofing is renowned for its superior durability and sleek, modern appearance. Its unique design features raised seams that interlock to provide a watertight seal, ensuring your roof remains resilient against the harshest weather conditions.

### KEY BENEFITS

- 1. Long-Lasting Performance:** Made from durable metal, these roofs withstand harsh weather and offer lasting protection.
- 2. Low Maintenance:** Interlocking seams prevent leaks and minimize upkeep, saving time and cost.
- 3. Energy Efficiency:** Reflective surfaces reduce heat absorption, lowering cooling expenses.
- 4. Aesthetic Appeal:** Sleek design and customizable colors enhance any building's modern look.
- 5. Environmentally Friendly:** Crafted from recyclable materials, promoting sustainable construction.



# Prefabricated Buildings

Prefabricated buildings are structures where most of the components, such as walls, floors, and even entire rooms, are manufactured off-site in a factory and then transported to the construction site for assembly. This method is often called modular construction. Key Features of Prefabricated Buildings:

- 1. Speed of Construction:** Since many elements are pre-made, construction time on-site is significantly reduced.
- 2. Cost Efficiency:** Prefabrication can lower costs due to mass production, reduced labor time on-site, and less waste.
- 3. Quality Control:** Factory production allows for better quality control of building components compared to traditional on-site construction.
- 4. Environmental Benefits:** Prefabrication often results in less material waste and can reduce the overall environmental footprint of a project.
- 5. Design Flexibility:** Modern techniques allow for a wide range of architectural designs, making it possible to create visually appealing and structurally sound high-rise buildings.





# Our Clients



VASUGAN MEDICAL  
SPECIALITIES PVT. LTD.



Bharath  
Electrical Works



SREYAS  
INSTITUTE OF ENGINEERING AND TECHNOLOGY  
AUTONOMOUS

A CERTIFIED & TRUSTED  
**PRIVATE LIMITED  
COMPANY**





## CONTACT US

Call : +91- 98480 60444 | 88860 60444

E-MAIL : [connect@vigneshpeb.com](mailto:connect@vigneshpeb.com)

WEB : [www.vigneshpeb.com](http://www.vigneshpeb.com)

## PLANT ADDRESS

11-19, Pinagadi Simhachalam Road,  
Rampuram, Andhra Pradesh - 531173.

### OFFICE - 1

+91 74160 60444

50-50-15/3. Seethammadhara,  
Near Prime Shoe Mart,  
Visakhapatnam - 530013

### OFFICE - 2

+91 83670 60444

Plot No-1570, 1<sup>st</sup> Floor G2,  
Niravana Kuteer, Pragathinagar, axis bank  
beside lane, Hyderabad - 500090

FOLLOW US



@vigneshpebsolutions



@VigneshPEBSolutions